

GOBBLIN

GRAPPLE SAW & LIFTING

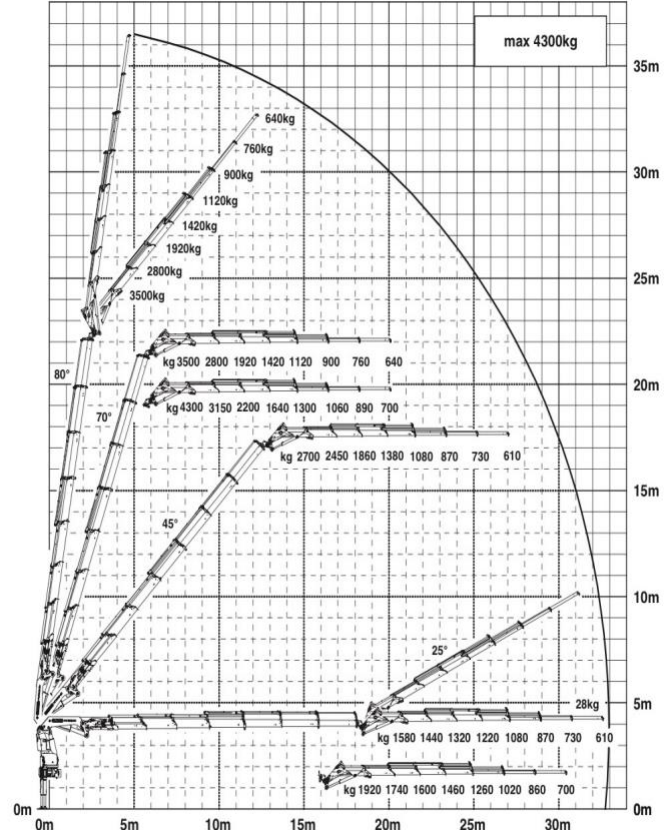
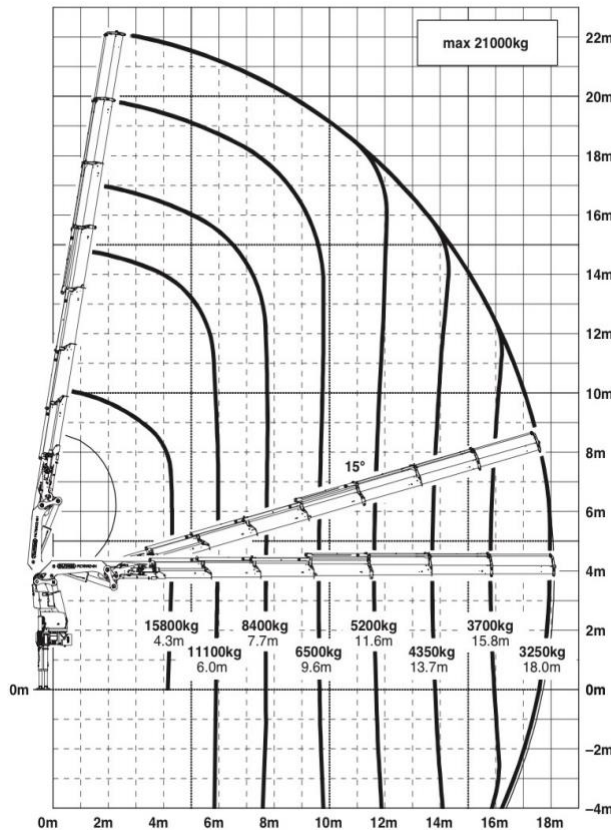
Mechanised Arboriculture & Specialist Lifting
Available for Subcontract Support Nationwide

Overview

Goblin Grapple Saw & Lifting provides specialist mechanised arboricultural and crane lifting services for projects where conventional methods are not practical or introduce unnecessary risk. Operating as a subcontract partner, the business supports contractors across rail, highways, utilities, construction, arboriculture, and commercial sectors, delivering controlled dismantling and precision lifting in constrained or high-risk environments.

Crane truck capability:

- 78 tonne metre crane
- 34m horizontal reach
- 37m vertical reach
- 610kg lift capacity at full horizontal reach
- 360 degree lifting capability
- Single machine cutting and lifting



G**BLIN** **GRAPPLE SAW & LIFTING**

Grapple Saw Capability

Grapple saw technology enables controlled sectional dismantling by securely holding timber during cutting and removal. This reduces reliance on climbing operations and significantly improves safety when dealing with large, hazardous or structurally compromised trees, particularly in areas with restricted access or limited drop zones.



Crane & Specialist Lifting Capability

Goblin Grapple Saw & Lifting Ltd provides dedicated crane and lifting support across construction, infrastructure, utilities and commercial sectors. The vehicle is equipped with a Palfinger PK78002 crane and PJ125 fly jib, delivering high reach, precision lifting for placement of materials, plant and structural components.

This setup allows lifting operations to be carried out in restricted or access limited environments, often removing the need for larger mobile cranes and reducing site footprint, mobilisation time and cost. The configuration supports lifting over obstacles and into confined areas, with front stabilisers enabling full utilisation of the crane envelope and 360 degree lifting capability where conditions allow.

All lifting operations are planned and executed in accordance with LOLER, supported by lift plans, RAMS and competent personnel, with a clear focus on load control, stability and safe integration into live sites.

Rail & Infrastructure Capability

Support for rail and infrastructure works where possessions, access restrictions and operational constraints require controlled methods of working. Suitable for lineside vegetation removal, trees overhanging infrastructure and sites where exclusion zones and safety controls are critical.

Commercial & Highways Capability

Delivery of mechanised tree removal and lifting support for highways, construction and commercial sites. Particularly effective for roadside operations, traffic sensitive environments and sites requiring rapid, controlled clearance to maintain program timelines. With full chapter 8 compliance.

G**BLIN** **GRAPPLE SAW & LIFTING**

Ash Dieback Management

Specialist capability in the removal of ash trees affected by ash dieback (*Hymenoscyphus fraxineus*), where structural integrity is compromised. Mechanised dismantling reduces risk associated with brittle timber, unpredictable failure and unsafe climbing conditions, providing a controlled and efficient solution for large scale programmes and roadside works.

Core Services

- Mechanised tree removal
- Crane assisted dismantling
- Specialist lifting solutions
- High risk and access constrained operations
- Infrastructure and highways support



Safety & Compliance

All operations are delivered in line with LOLER and PUWER, supported by detailed lift planning, RAMS and controlled execution. The business maintains full insurance cover aligned to principal contractor requirements and operates with appropriately qualified personnel, competency assurance and a compliance standard consistent with Tier 1 delivery. Focus is placed on reducing workforce exposure, maintaining control of loads and delivering works safely within operational constraints.

If you've got a job you're unsure how to approach, get in touch and we can work with you to solve your problem

Contact

Jorden Pontin - Adv.Dip.Arb

Director

M: 07506 628 942

E: info@grapplesaw.co.uk

W: www.grapplesaw.co.uk